

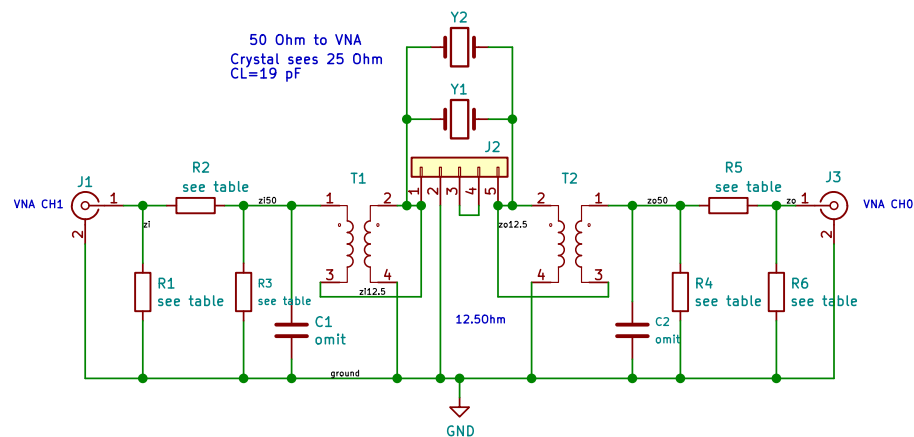
PARTS LIST					
QTY	REF	DESCRIPTION	P/N	ALT P/N	
1	J2	5 pos sip socket?	ESS-105-T-03	315-43-105-41-003000	
2	J1, J3	SMA?	132365-10**	W73251-0621*	
2	T1, T2	4:1 UN-UN***	T37-43?	623-5943000211	
-	R1-R6	see table (all resistors 1/8W 1% SMD-0805)			
-	C1, C2	omit (SMD-0805 pads)			

* SMA female connector – direct attach to nanoVNA
 ** SMA male connector
 *** 10T #28/#30 on either of the cores listed.

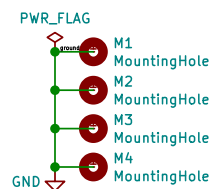
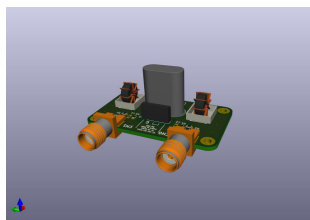
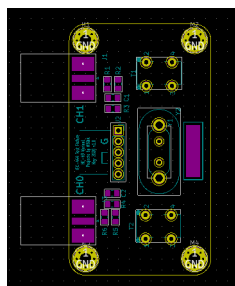
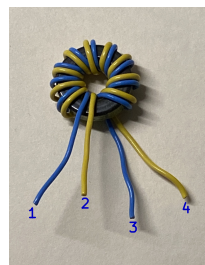
ATTENUATION (dB)			
	15	3	6
R1, R6	158	294	150
R2, R5	66.5	17.4	37.4
R3, R4	14.3	294	150

NOTES:
 - 15 dB attenuation after IEC444 test fixture. Bypass T1 and T2 (below)
 - 3dB and 6db attenuators may be needed for high output signal sources

Build notes:
 - to bypass input attenuators, short R2 and R5
 - to bypass T1 and T2, connect pads 1 and 3 at each transformer site
 - socket pins from IC socket or connector pins may be installed at Y1, Y2
 - fashion clamp from brass and solder to ground area near Y1, Y2



T1, T2



Developed from HC49S test fixture on GITHUB
 AMCP crystal parameter program

Projects by N5BIA

Sheet: /
 File: hc49s_test_fixture.sch

Title: IEC-444 Test Fixture – HC49 Variant

Size: USLetter Date: 2020-05-27

KiCad E.D.A. kicad 5.0.2-bee76a070ubuntu18.04.1

Rev: v1.0

Id: 1/1